

## Integration Note

Manufacturer:	Audiocast
Model Number(s):	<b>Audiocast</b>
g! Core Module Version:	8.7.602
Driver Developer:	Zoom Digital Home
Document Revision Date:	23 January 2023

### Overview

This driver is for devices with Audiocast Linkplay streamer built in. Many hardware brands use the audiocast linkplay API and can be controlled by this driver.

### Supported Features

- **Source Switching:** select any of sources.
- **Zone On/Off Control:** Two-way status and control of on/off.
- **Volume Control:** Two-way volume control for each discrete output.

Any feature not specifically noted as supported should be assumed to be unsupported.
--

### Driver License

This driver works for a trial period. After that it's requires a license key to function.

Pricing and license keys can be obtained contacting us by [drivers@zoomdigitalhome.com.br](mailto:drivers@zoomdigitalhome.com.br).

License keys are issued on a per controller basis. You only need a single license key for multiple instances on the same controller.

### Dealer Support

Any help or support questions, please, contact us by [drivers@zoomdigitalhome.com.br](mailto:drivers@zoomdigitalhome.com.br).

## Device Setup

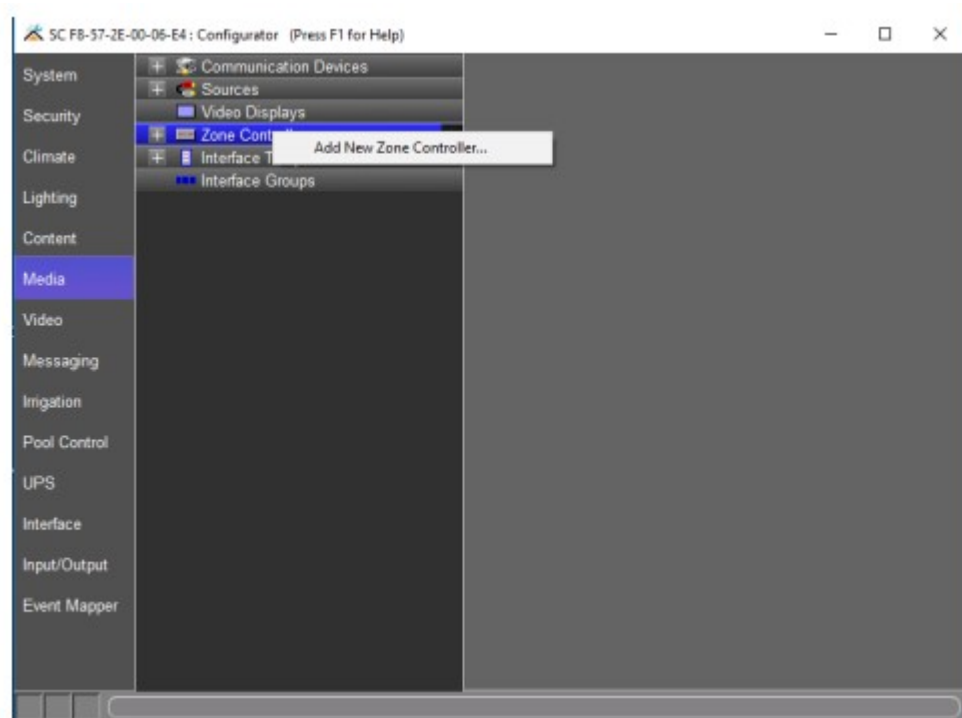
Set up your device as recommended by manufacturer's instructions.

Pay attention to IP address and communication port.

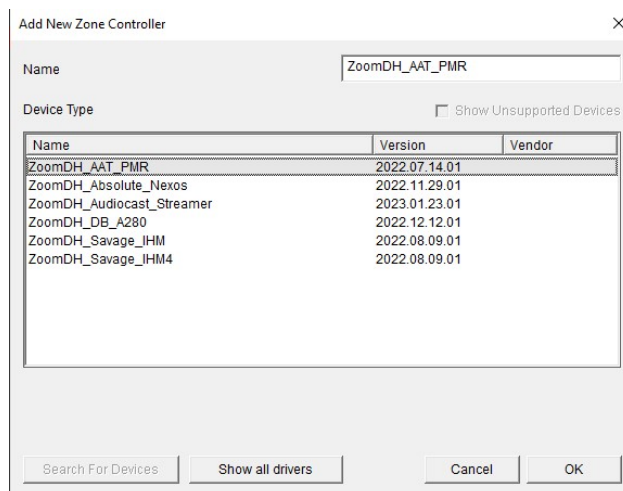
Set a static IP or reserve it on DHCP server.

## Installation Process

1. Please check the latest driver version on [www.zoomdigitalhome.com.br/drivers](http://www.zoomdigitalhome.com.br/drivers)
2. Under the Media tab in configurator, add a new Zone Controller.



3. Use the Search Folder button to point Configurator to the location of you saved the driver.



4. Select the driver and click OK.

## Common Mistakes

1. Incorrect IP address or TCP port settings.

## ELAN Developer Partner Information

This ELAN driver was written and supported by:



[www.zoomdigitalhome.com.br](http://www.zoomdigitalhome.com.br)  
[drivers@zoomdigitalhome.com.br](mailto:drivers@zoomdigitalhome.com.br)